

*Franklin County Republicans - A Party On the Move*

# **Franklin County Republican Party Precinct Committee Officer (PCO) Training**

*Version 09/19/2022*

# *Franklin County Republicans - A Party On the Move*

Developed by Bob Barmettlor

Phone; (509) 308-1261 (call or text)

Email: [rbarmettlor@yahoo.com](mailto:rbarmettlor@yahoo.com)

# *Franklin County Republicans - A Party On the Move*

## **Course Outline**

Objectives

Welcome

Introduction

Mission

Core Values

Party Structure

What Does A PCO Do

Tools and Techniques

Summary

# *Franklin County Republicans - A Party On the Move*

## **Course Objectives**

1. To learn what a Precinct Committee Officer (PCO) is
2. To gain an appreciation of the FCRCC and the role the PCO plays in the party
3. To learn the roles, responsibilities and tasks of a PCO
4. To learn about the various tools available to the PCO for performing their tasks

# *Franklin County Republicans - A Party On the Move*

## **Welcome**

### **Congratulations on Your Election or Appointment as a PCO**

You are the heart, soul, and strength of the party. Grassroots democracy begins with YOU. You represent the party to your neighbors and community and in turn you are the eyes and ears on the ground for both the County Party and State Party.

Your voter registration efforts and Get Out The Vote drives make the difference in elections. With your active and ongoing help in your precinct we will succeed in electing good conservative candidates to all levels of public office within Franklin County.

This training was prepared for you, the new PCO, by the FCRCC. The course will assist you in your efforts as a PCO. It is intended as a ready reference of value added information.

**Remember, You are the most CRITICAL part of the FCRCCs success**

# *Franklin County Republicans - A Party On the Move*

## **Introduction**

### **Mission**

The Franklin County Republican Party exists to elect Republicans and to ensure that our conservative values are sustained over time. Our mission is to elect Republicans to every elected office possible (local, county, state & federal).

We achieve this primarily through the efforts of our grassroots Precinct Committee Officers (PCOs) and our Precinct Captains (PCs). PCOs and PCs are both expected to perform the same duties and tasks.

Republicans get elected when PCOs are actively canvassing their precincts, knocking on doors, and making phone calls.

*Note: For purposes of this handbook, PCOs and PCs will both be referred to as PCOs.*

# *Franklin County Republicans - A Party On the Move*

## **The county Republican Party is guided by the following Core Values:**

- 1. Sanctity of the Constitution** - Our nation's founding fathers were guided by a core set of principles when they laid down the framework for the country, and those goals should continue to be upheld
- 2. Self-Defense** - The nation's future is contingent upon its citizens being able to bear arms to protect themselves from both domestic and foreign threats.
- 3. Equal Justice** - Americans deserve to live freely and equally with a single and fair justice system for all.
- 4. Limited Government** - America functions best when its citizens can govern themselves, with limited influence from the federal government
- 5. Value of the Free Market** - Competition drives growth and progress for the betterment of all its citizens

# *Franklin County Republicans - A Party On the Move*

## **Core Values cont.**

- 6. Right to Privacy** - To live freely without influence from the government or media
- 7. Pride In Country** - Conservatives believe patriotism should be a natural part of each American's life
- 8. Hard Work** - Each American has an obligation to invest in and contribute to society
- 9. Opposition to Special Interests** - Government and its leaders operate independently of pressure from special interest groups
- 10. Self-Help** - Americans have the capacity to lift themselves out of negative situations and should invest in self-improvement instead of relying on government to care for them



# *Franklin County Republicans - A Party On the Move*

## **Republican Party Structure**

### **PCOs are the Backbone of the Party**

The precinct is your neighborhood and the building block of the Franklin county political unit.

The legislative district works in conjunction with the county party to help elect Republicans to the state legislature.

The county central committee is made up of all the PCOs in the county and headed chairman and supported by an executive committee.

The state central committee is made up of every county chair and state committeeman and woman, who are elected by their respective county central committees.

The Republican National Committee is made up of state chairmen and national committeemen and women who are elected.

# *Franklin County Republicans - A Party On the Move*

## **Republican Party Structure Cont.**

Elections are a numbers game

Simply put, Republicans only win if they receive more votes than their opponents

PCOs are required to ensure that the as many Republicans, as possible, in their precinct vote

# *Franklin County Republicans - A Party On the Move*

## **Republican Party Structure Cont.**

A precinct is the smallest political unit in the country

The precinct is the most important voting and organizational unit within the Party

*The precinct is where elections are won and lost!*

# *Franklin County Republicans - A Party On the Move*

## **What a PCO Does**

Why become a PCO

Duties & Authorities

Legal Responsibilities

Expectations

Responsibilities

Job Tasks

# *Franklin County Republicans - A Party On the Move*

## **Why Become A PCO**

Being a PCO is one of the best ways to be involved in the Republican Party at the local level

PCOs are the grass roots of the Republican Party

PCOs are vital to the local party's success. They are the "Boots On the Ground"

PCOs are on the front line of winning elections up and down the ballot – from the School Board to the Senate

## **Duties & Authorities**

The PCO is the official elected representative of the precinct to the Republican Party

This is a partisan office established to represent the voters within a specific geographical area

The PCO's duties and responsibilities are set forth in state law and the WSRP's bylaws.

# *Franklin County Republicans - A Party On the Move*

## **Legal Responsibilities**

### **Legal Basis for a PCO is specified in RCW 29A.80 Political Parties**

Assist in organizing your County Party by electing officers of the County's Central Committee.

Serve as a voting member of the County Central Committee.

Responsible for electing replacements to fill vacancies in other elected partisan offices such as County Commissioner or State Legislators.

Call and conduct precinct caucus, as directed by the County Chairman.

# *Franklin County Republicans - A Party On the Move*

## **Legal Responsibilities Cont:**

### **PCO Eligibility & Elections (RCW 29A.80.041 & RCW 29A.80.051)**

Be a member of the Republican Party.

Be at least 18 years old.

Be a registered voter in the precinct.

File for election in the even numbered years.

If unopposed, a PCO candidate is automatically elected, if opposed whoever received the most votes in the August Primary will be elected.

Serve a 2 year term starting *December 1* following the election.



# *Franklin County Republicans - A Party On the Move*

## **Legal Responsibilities Cont:**

### **PCO Appointment (RCW 29A.28.071)**

Appointment for open precincts must be made after the county reorganization meeting.

Eligibility: must declare to be a member of a major political party, registered voter in the precinct.

Appointment is made by the County Chair and may require approval of the County Executive Board.

### **Precinct Captain (WSRP Bylaws)**

If the County Chair cannot find a person within a precinct to serve as a PCO, then he or she may appoint a precinct captain. This individual acts as a PCO but does not have to live within the precinct.

Same eligibility and process as a PCO appointment except appointees may live outside the precinct to which he or she is being appointed Captain.

# *Franklin County Republicans - A Party On the Move*

## **Legal Responsibilities Cont:**

The FCRCC Bylaws describe in detail the legal responsibilities of the PCO.

It is critical for you to be knowledgeable of the bylaws!

# *Franklin County Republicans - A Party On the Move*

## **Expectations**

PCOs are expected to be active in their Legislative Districts by attending monthly Franklin County Republican Central Committee (FCRCC) meetings, sponsored events, and supporting their local candidates

PCOs can enhance their effectiveness through other activities such as by attending Washington State Republican Party events, campaign-related fundraisers, and volunteering with local or statewide campaigns in your district

Active participation is critical in our ability to succeed in our mission

# *Franklin County Republicans - A Party On the Move*

## **Responsibilities:**

The most important day-to-day job is just regularly talking to your neighbors

Ensuring Republicans in your neighborhood return their ballots during election time

Observing elections in your county to ensure free and fair elections

Electing County Party leaders and contributing to the direction of your county party (endorsing candidates, changing the platform, etc)

Educating undecided voters on local, state & national issues of importance

Building community connections in your precinct

Learning about and helping endorsed candidate campaigns

# *Franklin County Republicans - A Party On the Move*

## **Responsibilities cont.**

Registering Republican voters

Helping bring new individuals into the party

Serve as the political representative for your precinct

Know your precinct and who is in the precinct (both Republicans & Democrats)

Vote for the FCRCC endorsement of candidates

Vote on FCRCC propositions/recommendations

Determine how the FCRCC spends its money

Recruit and Train Volunteers

Ensure the voices of the voters are heard in local party decisions

# *Franklin County Republicans - A Party On the Move*

## **Tips for Managing Your Responsibilities**

Set up a filing system (electronic and/or paper-based) to organize your materials. *Set it up in a way that works best for you and makes information sharing with your local organization seamless and efficient.*

Keep a calendar of your canvassing schedule, precinct events, party meetings, and caucus and convention schedules

Set up electronic folders to manage email

Post a map of your precinct for easy reference

Consider setting up a dedicated email address

Consider ordering business cards with contact information, *but only include information you are comfortable sharing with the public.*

You can always write a note on the back.

Utilize a checklist and map for canvassing.

# *Franklin County Republicans - A Party On the Move*

## **Who To Call For Help & Support**

Contact other PCO's they are available to help answer questions, and/or assist you

Contact any member of the FCRCC Executive Committee if you need assistance (most of them are PCOs)

If you need a voter phone numbers, email addresses or such canvassing tools contact Bob Barmettlor (509) 308-1261 and/or [rbarmettlor@yahoo.com](mailto:rbarmettlor@yahoo.com)

# *Franklin County Republicans - A Party On the Move*

## **Job Tasks**

### **Learn About Your Precinct:**

Get a copy of your precinct map and precinct voter canvassing list

Learn the demographics including; boundaries, the number of houses and apartment buildings, religious centers, schools, businesses etc.

Get to know your neighbors. Meet the Republican/conservatives in your precinct; learn about their interests, problems, and concerns

Be aware of and sensitive to the economic and cultural makeup of your precinct

Keep track of young people who will be 18 years old before Election Day and get them registered to vote

Host a house party, community event, BBQ, candidates' forum, or political video party to bring together voters in your neighborhood *(the FCRCC may be able to provide you funds for some activities, you need to ask)*

Learn about the major concerns of the state, county, and your precinct. Know what the controversial issues are in your community and how the majority of people in your precinct feel about them

It's important to let Republicans in your precinct know who you are and that you're there to help them



# *Franklin County Republicans - A Party On the Move*

## **Job Tasks** cont.

### **Identify Current and Likely Republicans in Your Precinct:**

The best way to accomplish this is by canvassing your precinct

Canvassing can be accomplished through either knocking on every door or calling every registered voter in the precinct

The best way to canvas is to walk your precinct and knock on doors!

In rural precincts it may also be effective to do some phone canvassing

Canvassing must be done on a routine basis. It cannot solely be done in the last few weeks (e.g. GOTV campaign) leading up to Election Day

# *Franklin County Republicans - A Party On the Move*

## **Job Tasks** cont.

### **The best times for door to door canvassing:**

Monday through Thursday 3:30 pm to dark

Saturday 11:00 am to 6:00 pm

Sunday 1:00 pm to 6:00 pm

# *Franklin County Republicans - A Party On the Move*

## **Job Tasks** cont.

### **Door to Door Canvassing Tips:**

Approach every door confidently

After knocking or ringing the doorbell, stand back a few feet so you are respecting their personal space

Maintain good eye contact and open body language

Assume they support the conservative platform

You have a lot of people to talk to, so focus on short, effective conversations

Don't waste time debating with non-supporters, it's pointless!!

# *Franklin County Republicans - A Party On the Move*

## **Job Tasks** cont.

### **Door to Door Canvassing Tips** cont.

Conversations where the voter does most of the talking (and you listen) can actually change people's minds

In households with more than one voter, if one person votes, usually all do

If the residents aren't home, leave any literature at their front door, somewhere it will be visible and won't blow away (e.g. sticking out from under the doormat, or folded in the door handle)

Do NOT leave literature in or on the mailbox, or even under the little 'flag' alerting postal carriers to pick up letters, it is against the law!

If the yard is fenced, the driveway gated, or there's a menacing dog, skip the house and phone them instead

Apartment buildings may be locked or inaccessible. Try to find a helpful resident to let you in or appoint a volunteer who lives in the building to contact residents.

# *Franklin County Republicans - A Party On the Move*

## **Job Tasks** cont.

### **Example Canvassing Script**

“Hi! I’m Bob Barmettlor, your neighbor over on West Maple Dr. I’m the Republican Committee Person for our precinct. I just wanted to introduce myself and give you my contact information. Please don’t hesitate to contact me if you have any questions about our Republican candidates and elections. By the way, is there anyone in the household who needs to register to vote or change their registration status? I have some registration forms if you need them!”

#### *Notes:*

- *Be sure to pass on any campaign related materials at this time*
- *If no one is home, leave your materials with a note saying “how sorry you were to have missed them*

# *Franklin County Republicans - A Party On the Move*

## **Job Tasks** cont.

### **Conducting the Get Out The Vote (GOTV) Campaign:**

Direct Voter Contact is the proven and most effective way to get out the vote. Direct contact is achieved through door-to-door contact and phone calls. *It is not achieved through indirect voter contact such as sign waving or literature dropping.*

PCOs are highly encouraged to door knock rather than phone call their precinct. *Knocking on a door is much more effective at turning out voters than phone calls.*

The GOTV campaign makes or breaks elections! *A few extra Republicans voting will swing many elections.*

# *Franklin County Republicans - A Party On the Move*

## **Job Tasks cont.**

### **Canvassing Do's & Don'ts:**

Be friendly

Be brief and be a good listener

Have all the answers available, either in your head or in your literature

If you don't have the answer, be honest about it and promise to get back. That also opens the door to a follow up call or visit

Do leave appropriate literature if possible

Do leave the names and contact information of local leaders in the Republican Party

Don't raise controversial issues

Don't argue or antagonize it wastes time

Don't make disparaging remarks about Democratic Party organizations or office holders

Don't make any claims about opposition candidates which cannot be proven

# *Franklin County Republicans - A Party On the Move*

## **Job Tasks** cont.

### **Canvassing Do's & Don'ts** cont.

Canvassing with a partner is always more fun and safer

Find volunteers to help canvas

Be sure to keep a good pace

Don't waste time, but if you feel that you can swing them, keep the conversation going

Keep a positive attitude!

Make sure your cell phone is charged

If you cannot answer a question, don't B.S. them (*follow-up*)

Be sure to take along snacks & water

Have fun and don't get frustrated!



# *Franklin County Republicans - A Party On the Move*

## **Job Tasks** cont.

### **Canvasing Dos & Don'ts** cont.

Have appropriate body language

Show confidence and respect

Have a conversation (*don't read from a script*)

Practice your opening and adapt what works for you personally

Don't say anything that could be construed as racist, sexist or discriminatory

No defamatory language

No name calling or personal attacks

Have a good knowledge of the local community & party issues

Don't reference bad sources of information

# *Franklin County Republicans - A Party On the Move*

## **Job Tasks** cont.

### **Canvasing is Proven to be Effective:**

Contacted voters are more likely to vote with each interaction

All household members, even those not spoken to, are more likely to vote

Localized messages and personal connections are very important

Is the most effective means for a campaign to contact voters with their message

Refreshed data helps the party and campaigns better target voters and makes best use of time and resources

# *Franklin County Republicans - A Party On the Move*

## **Job Tasks** cont.

### **A Very Nice Canvassing Side Benefit!**

While canvassing you might find a potential volunteer that wants get more involved. Here is what you should do:

- Schedule a 1 on 1 meeting
- Tell your story, teach them to tell their story
- Tell them about the FCRCC
- Ask to join our team and help have a positive impact

# *Franklin County Republicans - A Party On the Move*

## **Job Tasks** cont.

### **A Typical Doorstep Conversation:**

- Introduce yourself and Say What Organization/Campaign You Are With
- Immediately Begin your Story and why You Support a Certain Candidate
- Hand Them any Campaign Material
- If They are Willing to Talk - Listen To Them!
- Find Common Ground with the Voter
- Remind Them of the Election Dates and Ask them to Spread the Word

# *Franklin County Republicans - A Party On the Move*

## **Job Tasks** cont.

### **Doorstep Conversation cont.**

After introduction, roughly 50% of the voters will not want to talk

If they don't immediately want to talk, be understanding of their reasons, but at least hand them any material you may want them to have, then reiterate that you support that platform/candidate, then ask them if they support local Republican candidates

Most conversations will only last a minute or two. Try and make sure the experience is positive

If the person is open to talking, make sure you listen to what they are saying and make sure you are finding common ground (*takes practice*)

No matter the result of the conversation, be sure to record the information about the contact (*this data needs be collected by the FCRCC & state party!*)

# *Franklin County Republicans - A Party On the Move*

## **Job Tasks** cont.

### **Common Questions Voters Ask:**

How do I find out if I'm registered to vote?

How do I register to vote?

Where do I register to vote?

What is my precinct number?

When is the primary?

What do I have to do to vote in the primary?

Can independents vote in the primary?

When is the general election?

# *Franklin County Republicans - A Party On the Move*

## **Job Tasks** cont.

### **Common Questions Voters Ask** cont.

Can anyone vote?

What does the Republican Party stand for?

Who are the candidates?

What are their qualifications or positions?

What can I do to help?

Are there any Republican/conservative organizations around? How do I join?

Where can I get bumper stickers, buttons, campaign literature, etc?

Who is the County party Chair?

Who's in charge of the precinct?

# *Franklin County Republicans - A Party On the Move*

## **Job Tasks** cont.

### **Recruit and Train Volunteers:**

When you talk with your neighbors, tell them how much you enjoy your involvement in Republican Party politics

See if they would be interested in doing volunteer work or becoming otherwise involved

Report all interested people to the FCRCC as soon as practical

Provide them with information on how to get in contact with the party (website etc.)

Invite them to the next monthly FCRCC meeting



# *Franklin County Republicans - A Party On the Move*

## **PCO Job Tasks** cont.

### **Be Active In the Community and the Party:**

There is always something for a PCO to do in their Precinct!

Most importantly, be out there in front of voters to promote Republican candidates and party ideals, and to be a resource for your neighbors.

Here are some ways you can do that:

- Be visible during campaign season.
- Distribute Party and candidate literature, display yard/window signs and assist with gathering signatures for petitions
- Get to know Party officers and elected officials
- Get acquainted with your FCRCC chair, Executive Committee members and other county PCOs
- Keep up to date on party activities

# *Franklin County Republicans - A Party On the Move*

## **PCO Job Tasks** cont.

### **Here are some ways you can do that cont.**

Support activities of city, county and state organizations

Know the Republican candidates running in upcoming elections

Attend FCRCC events and activities. Encourage others to participate as well

Host your own Party events and invite your neighbors. Include not just Republicans but voters who lean conservative and even others who might be persuadable

# *Franklin County Republicans - A Party On the Move*

## **PCO Job Tasks** cont.

**Your challenge - Are you up to the task?**

**Seriously ponder these two questions:**

Is getting out in your precinct and talking to people your cup of tea?

Are you willing to devote enough of your time & effort to be an effective PCO?

# *Franklin County Republicans - A Party On the Move*

## ***Advantage Application - A Very Helpful Tool***

*The primary benefit for using an app is that it eliminates the use of paper. All your canvassing data collection can be performed on your phone or tablet*

*Advantage* app links directly to the Washington State Republican party database

Washington State Republican party database is part of a larger national Republican database (*GOP Data Center*)

Historically the FCRCC has not used the app very much

Bob Barmettlor is the Point of Contact for obtaining *Advantage* credentials

# *Franklin County Republicans - A Party On the Move*

## **Benefits of the *Advantage* Software**

Battle tested, used in all 50 states in 2020 and contracted with 40 state parties

Exclusive Canvassing system for the Trump campaign in 2016 and 2020

The only RNC approved app operating in Washington state

Syncs directly with GOP Data Center, allowing for seamless targeting for local and federal candidates

Support system, WSRP staff are fully trained to handle troubleshooting and tech issues

# *Franklin County Republicans - A Party On the Move*

## **Basic Steps To Using Advantage**

Apply for Credentials (*allows for access into the application*)

Installing the Software Application on Your Device (*computer, laptop, phone*)

Logging into Your Advantage Account

Selecting precinct Walkbooks you created

Using list & Map Views

Inputting the new & updated data you gathered from your canvassing activity

Sync Collected Data to State GOP Data Center

# *Franklin County Republicans - A Party On the Move*

There are other apps you can use besides ***Advantage***

Another tool growing in popularity is ***Campaign Sidekick***

This Sidekick works in a similar manner as Advantage

# *Franklin County Republicans - A Party On the Move*

## **Working Without an App - No Problem!**

The FCRCC will provide you with Excel Spreadsheets containing voter information

Just contact Bob Barmettlor to get the spreadsheet for your precinct

Once you have the electronic file you can manipulate & sort it as desired

Bob can also provide you with a wide variety of customized spreadsheets



# Franklin County Republicans - A Party On the Move

## A typical precinct spreadsheet example

	A	B	C	D	E	F	G	H	I	J	K	L	M	N	O	P	Q	R
	LastName	FirstName	MiddleName	SuffixName	PrimaryAddress1	PrimaryCity	PrimaryState	PrimaryZip	PrimaryZip4	PrimaryH	PrimaryStreetName	Primary	PrimaryPhone	Gender	ObservedParty	CalculatedParty	HouseholdParty	Qv
2	ABRAHAM	CHRISTOPHER	R.		3913 Road 92	Pasco	WA	99301	1584	3913	Road 92		5095392081	M	Soft Republican	5 - Hard Democrat	Democrat Only	
3	ADAMS	EDWARD	JAMES		3612 Riesling Ct	Pasco	WA	99301	3878	3612	Riesling	Ct	5099473890	M	Unidentified	2 - Weak Republican	Republican Only	
4	ALFORD	CARLA	ANNETTE		3204 Cavalier Ct	Pasco	WA	99301	5586	3204	Cavalier	Ct	5095473655	F	Unidentified	1 - Hard Republican	Republican Only	
5	ALLEN	CARLA	EDITH		8612 Maple Dr	Pasco	WA	99301	1695	8612	Maple	Dr	5095395001	F	Unidentified	3 - Swing	Other Only	
6	AMBROSE	JULIE	LYNN		3905 Road 96	Pasco	WA	99301	1581	3905	Road 96		5095440127	F	Unidentified	2 - Weak Republican	Republican Only	
7	ANDA	PETER	R.		8904 Maple Dr	Pasco	WA	99301	1631	8904	Maple	Dr	5094383449	M	Hard Republican	2 - Weak Republican	Republican Only	
8	ANDA	VANESSA	S.		8904 Maple Dr	Pasco	WA	99301	1631	8904	Maple	Dr	2063071552	F	Soft Republican	2 - Weak Republican	Republican Only	
9	ANDREWS	JEFFREY	E.		8921 Maple Dr	Pasco	WA	99301	1632	8921	Maple	Dr	5094389773	M	Unidentified	2 - Weak Republican	Republican Only	
10	ANGUIANO	ANTHONY			9104 Sunset Trl	Pasco	WA	99301	1689	9104	Sunset	Trl	5095475452	M	Unidentified	1 - Hard Republican	Republican Only	
11	ARBOGAST	DARIN	MICHAEL		8709 Sterling Rd	Pasco	WA	99301	4970	8709	Sterling	Rd	5099902329	M	Soft Republican	1 - Hard Republican	Republican Only	
12	AUSTIN	HEIDI			9106 Maple Dr	Pasco	WA	99301	1678	9106	Maple	Dr	5095214689	F	Unidentified	2 - Weak Republican	Republican Only	
13	BAGLEY	SHIRLEY	C.		3725 Road 96	Pasco	WA	99301	1509	3725	Road 96		3609316125	F	Hard Republican	1 - Hard Republican	Republican Only	
14	BAILEY	RODNEY	DAJL		8621 Maple Dr	Pasco	WA	99301	8219	8621	Maple	Dr	5095515933	M	Unidentified	2 - Weak Republican	Republican Only	
15	BARMETTLOR	ROBERT	BUDD		9005 Maple Dr	Pasco	WA	99301	1630	9005	Maple	Dr	5095475197	M	Soft Republican	2 - Weak Republican	Republican/Other	
16	BATEY	JANICE			9800 Maple Dr	Pasco	WA	99301	8293	9800	Maple	Dr	5097275312	F	Soft Republican	1 - Hard Republican	Republican Only	
17	BATEY	JENNA	LYNN		9800 Maple Dr	Pasco	WA	99301	8293	9800	Maple	Dr	5094388580	F	Unidentified	4 - Weak Democrat	Democrat Only	
18	BATEY	JESSICA	CAROLYN		9800 Maple Dr	Pasco	WA	99301	8293	9800	Maple	Dr	5097275312	F	Unidentified	4 - Weak Democrat	Democrat Only	
19	BERGLIN	JENNIE	LYNN		8904 Sunset Trl	Pasco	WA	99301	1669	8904	Sunset	Trl	5095479300	F	Soft Republican	1 - Hard Republican	Republican Only	
20	BERNHARD	JAMES			9420 Red Roan Ct	Pasco	WA	99301	1999	9420	Red Roan	Ct		U	Unidentified	3 - Swing	Republican/Other	
21	BRAGG	KERRY	HOUTROUW		9020 Sunset Trl	Pasco	WA	99301	1675	9020	Sunset	Trl	5092221938	F	Unidentified	3 - Swing	Republican/Other	
22	BREWINGTON	DENISE	RAE		8615 Bell St	Pasco	WA	99301	1649	8615	Bell	St	5095392729	F	Hard Democrat	4 - Weak Democrat	Democrat Only	
23	BROCK	JULIYA	MARIE		3107 Cabernet Ct	Pasco	WA	99301	1592	3107	Cabernet	Ct		F	Unidentified	3 - Swing	Republican/Other	
24	BROWN	CARYLE	E.		3120 Chardonnay Dr	Pasco	WA	99301	3481	3120	Chardonnay	Dr	5093805164	F	Unidentified	2 - Weak Republican	Republican Only	
25	BUCHER	JAMES	IGNATIUS	JR	3116 Road 92	Pasco	WA	99301	1539	3116	Road 92		5096286166	M	Unidentified	2 - Weak Republican	Republican Only	
26	BUNCH	FREDERICK	MICHAEL		9016 Sunset Trl	Pasco	WA	99301	1675	9016	Sunset	Trl	5097837747	M	Unidentified	4 - Weak Democrat	Democrat Only	

# *Franklin County Republicans - A Party On the Move*

## **Using the Spreadsheet Precinct Data**

If you are not familiar with Excel, a Word version of the data can be provided to you

Use the data and a precinct map to determine the best way to divide your precinct for canvassing activities

Perform the canvassing activity (*note this will take multiple days*)

After each contact take notes regarding the experience

Keep the notes simple (*republican yes/no/unclear, contacted yes/no, etc.*)

Transfer your notes to your electronic file (*make the updates clear to the viewer*)

Provide a copy of the updated electronic files to Bob Barmettlor (*he will take handwritten copies as a last resort*)

# *Franklin County Republicans - A Party On the Move*

## **Using the Spreadsheet Precinct Data** cont.

Remember the data in the spreadsheet is likely to be somewhat dated. Communities are dynamic and always changing. Remember the data is only good as the last time it was updated by the PCO.

That is why, when you are going door to door canvassing, to always markup the spreadsheet with corrected data

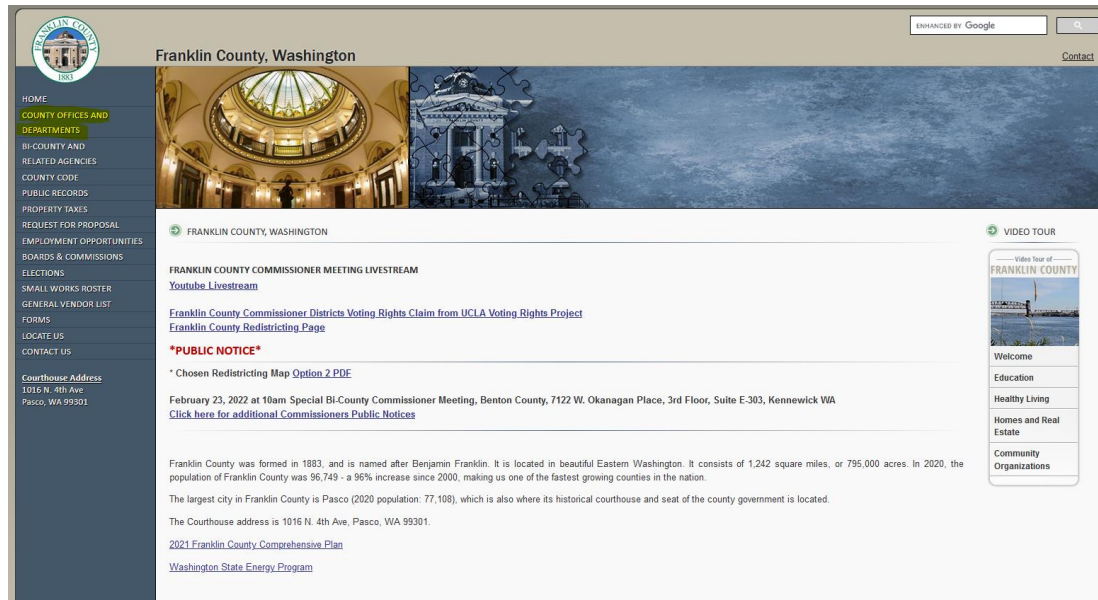
The updated information you collected needs to be provided to Bob Barmettlor so he can update the GOP Data Center database

# Franklin County Republicans - A Party On the Move

## How to Get Your Precinct Map

First go to the Franklin County Web page using the [www.co.franklin.wa.us](http://www.co.franklin.wa.us)

It should like this after you click the hot link [www.co.franklin.wa.us](http://www.co.franklin.wa.us)



The screenshot shows the Franklin County, Washington website homepage. At the top left is the Franklin County logo with the year 1883. The main header features a large image of the county courthouse dome and a search bar with the text "ENHANCED BY Google". A navigation menu on the left lists various services such as HOME, COUNTY OFFICES AND DEPARTMENTS, and ELECTIONS. The main content area includes a "FRANKLIN COUNTY COMMISSIONER MEETING LIVESTREAM" link, a "PUBLIC NOTICE" section with a link to a redistricting map, and a "VIDEO TOUR" section with a "Welcome" link. The footer contains information about the county's history, population, and contact details.

# Franklin County Republicans - A Party On the Move

## How to Get Your Precinct Map cont.


Click on the button hi-lited in Yellow. Once you do that you should see the following screen. On the screen scroll down until you see the hot link I hi-lited in yellow.

The screenshot shows a website navigation menu with a dark blue sidebar on the left and a light gray main area on the right. The sidebar contains the following text: **Courthouse Address**, 1016 N. 4th Ave, Pasco, WA 99301. The main area contains a list of links under various department headers: **County Commissioners** (Meeting Agenda, Meeting Minutes, Franklin County Code, Public Records, Small Works Roster / General Vendor List, Boards, Commissions, Councils and Committees); **District Court** (Download Forms, Search Court Cases / Court Calendar); **Human Resources Department** (Employment Opportunities, Collective Bargaining and Salary Matrix, Civil Service, LEOFF / Disability Board); **Information Services** (GIS (Geographic Information System) - highlighted in yellow); **Office of Public Defense**; **Planning & Building** (Code Enforcement Program, Business Registration, Outdoor Burn Program, Maps); **Prosecutor**; **Public Works** (County Roads, Resolutions and Ordinances, Solid Waste Department).

# Franklin County Republicans - A Party On the Move

## How to Get Your Precinct Map cont.

Then click on the yellow hi-lited hot link and you should see the following screen.







### Franklin County GIS

Welcome to the GIS Portal of Franklin County, a member of the Franklin County Regional Information System (FRIS), which includes these agencies:

- Franklin County Public Works,
- Franklin Public Utility District,
- South Columbia Basin Irrigation District.

All maps include tools to search an address or place name, show a legend of features, change background imagery ("Basemap Gallery"), show an Overview map, show measurements or latitude & longitude, and share or print a map screenshot.

<h4>Franklin County Base Map</h4> <p>A standard base map which includes terrain, parcels, roads, addresses, waterbodies, city boundaries, and townships and sections.</p> 	<h4>Franklin County Planning Map</h4> <p>A map that includes information related to planning and building, such as zoning and urban growth areas.</p> 	<h4>Franklin County Districts</h4> <p>A map that includes city and county boundaries, taxing districts, and voting precincts, along with parcels for location reference.</p> 	<h4>Franklin County Public Works</h4> <p>A map from the Public Works department showing roads, bridges, and road delays or closures.</p> 
---	---	--	--

**DISCLAIMER AND TERMS OF USE:**

*All information depicted herein is provided as is by the Franklin County Regional Information System (FRIS), with no expressed or implied warranty or guarantee of information usability, accuracy, or suitability. FRIS is a group of agencies in the county that includes Franklin County GIS and Public Works, Franklin Public Utility District #1, and South Columbia Basin Irrigation District. Neither FRIS nor any member agency shall be liable for any errors within or implied by the provided information.*

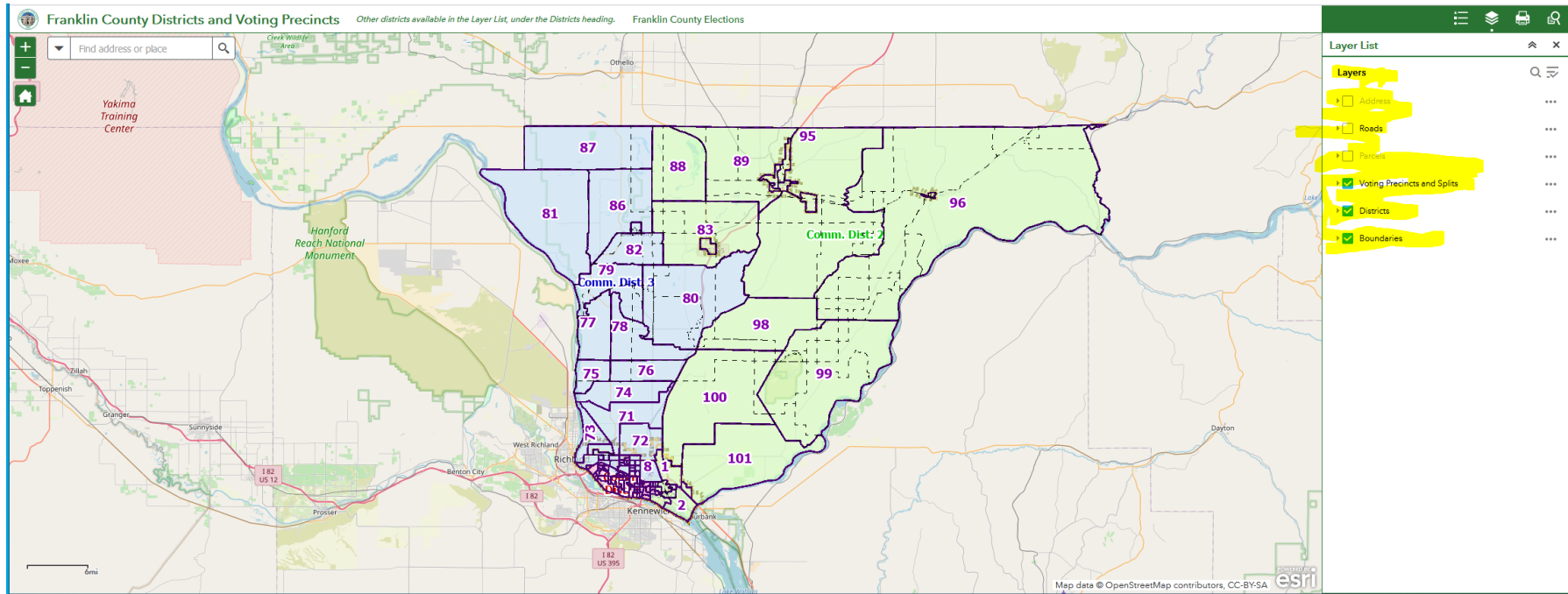
[Data Downloads](#)

[Website assistance](#)

# Franklin County Republicans - A Party On the Move

## How to Get Your Precinct Map cont.

As before, click on the yellow hot link and you should see the next screen.



# *Franklin County Republicans - A Party On the Move*

## **How to Get Your Precinct Map cont.**

You are now on the correct web page for precinct maps. Type in the desired precinct number in the white search bar (upper left) and click the magnifying glass. Your precinct map will then pop up.

Copy this address to your favorites for any future direct access

<https://gisportal.franklin.co.franklin.wa.us/arcgisportal/apps/webappviewer/index.html?id=ddda0d1418db415dabfbc7ab057e85b4>

Use as desired, the yellow hi-lited buttons to select the features on the map you are looking for. Just play around with the buttons until you find the map layers you are looking for.

To increase the size of the map all you have to do to double click on the map section you want to enlarge. The map can get very large, clear to the individual house level of detail.



# Franklin County Republicans - A Party On the Move

Don't forget, the PCO is an elected position

Here is a blank Declaration of Candidacy Form for PCO

Declarations can be filed on-line or completed hard-copy

The auditors office prefers on-line

It is quick & easy to do

## Declaration of Candidacy Precinct Committee Officer

instructions	File this form with your county elections department. No filing fee is required. Note: This document becomes public record once filed.		
office information	member of the:	<input type="radio"/> Democratic Party <input type="radio"/> Republican Party	
	precinct representing (name / number)		
personal information as registered to vote	first name	middle	last
	date of birth (mm / dd / yyyy)		phone number
	residential address		city / ZIP
ballot information	exact name I would like printed on the ballot (only contested races will appear on the ballot)		
contact information	mailing address (if different from residential address)		city / ZIP
	email address		phone number
oath	I declare that the above information is true, that I am a registered voter residing at the residential address and precinct listed above, and that I am a candidate for Precinct Committee Officer for the party and precinct identified above. Further, I declare, under penalty of perjury, that I will support the Constitution and laws of the United States, and the Constitution and laws of the State of Washington.		
	sign here		date here
for office use only	voter registration number	date	
	<input type="checkbox"/> precinct verified	office code	
	staff		

# *Franklin County Republicans - A Party On the Move*

## A few helpful web links:

- Franklin County precinct maps - [www.co.franklin.wa.us](http://www.co.franklin.wa.us)
- Franklin County - [www.co.franklin.wa.us](http://www.co.franklin.wa.us)
- City of Pasco - <https://pasco-wa.gov/council>
- Washington State Republican Party - <https://wsrp.org/>
- FCRCC web page - <https://franklinrepublicans.com/>
- Washington State Legislature - <https://leg.wa.gov/>

# *Franklin County Republicans - A Party On the Move*

## To Summarize:

Learned what a PCO is

Gained an appreciation of the FCRCC and the role the PCO plays in the county party

Learned the roles, responsibilities and tasks of a PCO

Learned about the two primary tools the PCO needs

*Now it is up to you to go out and make the magic happen! Good Luck!*

## *Franklin County Republicans - A Party On the Move*

Please provide any feedback you have regarding this material to [rbbarmettlor@yahoo.com](mailto:rbbarmettlor@yahoo.com)